

Caird Hall Dundee Access Guide

CAIRD HALL

Dundee's Concert &
Conference Venue



Drop Off Points



The Caird Hall is situated in the pedestrianised City Square.

* The ramp access is to the right of the building.



Top of Crichton Street.



Top of Castle Street.



Stairs from Crichton Street to City Square.



Coach drop-off at the foot of Crichton Street.

Blue badge parking bays are located in Crichton Street, Castle Street, Reform Street, Bank Street and in Shore Terrace car park.

External Ramp Entrance

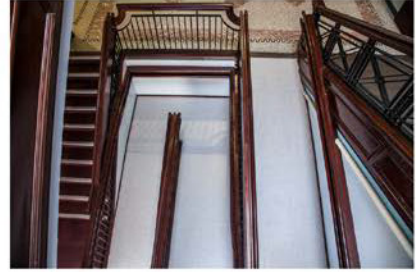


Located at the west entrance -
Marryat Door.

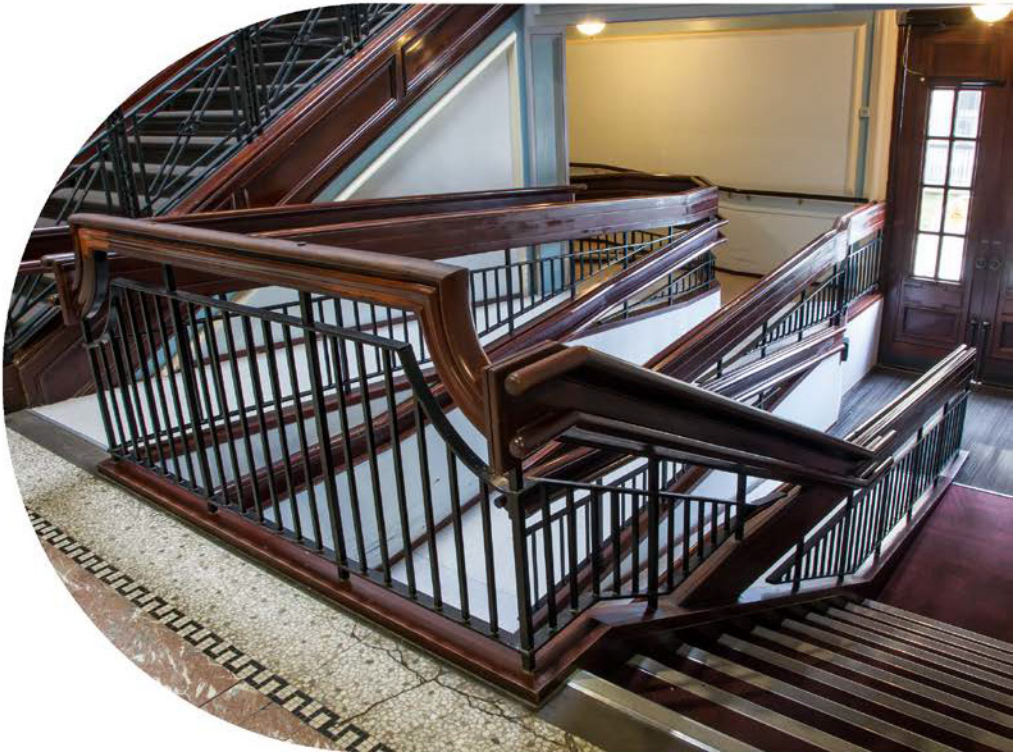
Maximum Dimensions for
scooters Length - 104cm
Width - 56cm.



Internal Ramp on Entrance



Inside entrance.



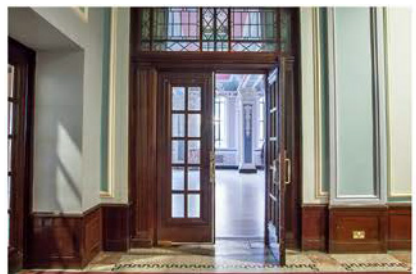
Level Access All Facilities



Caird Hall Stage



Caird Hall Stalls



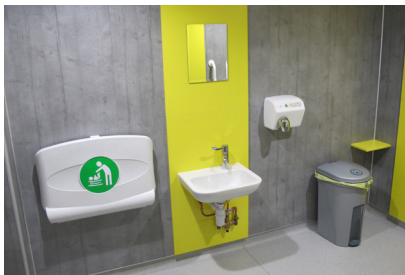
Marrayt Hall

Level Access to all facilities is available on both stalls and balcony levels.
All entrance doors 140cm Wide x 231cm Height.

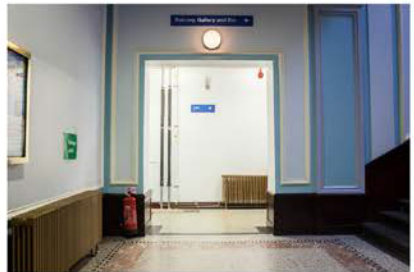
Stalls Accessible Facility with Baby Change



Located to the left at the top of the internal ramp.



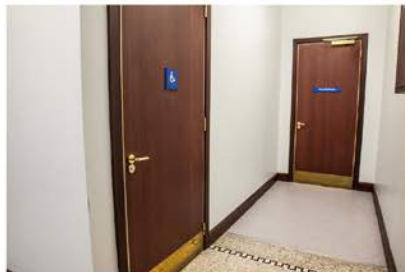
Lift To Balcony



Lift Operated by Caird Hall Staff Only

Lift Doors
79cm Wide x 200cm Height

Balcony Accessible Facility



To the left of the north balcony corridor.



Hearing Assistance Facilities

The Caird Hall is equipped with an **Inducton Loop** and a **Williams Wavecast System** in the main auditorium.

On arrival please check with door staff the system in operation for the event you are attending.

To access the **Induction Loop** please switch your hearing aid to the T position.

To access the **Wavecast** system please request receiving equipment from the duty venue staff. The loop is suitable for persons wearing a hearing aid and worn around the neck. It is also possible to download the **Wavecast** app to use on your phone. Full instructions for use and access codes are provided by venue staff, 30 minutes before the Show start time.



Assistance Dogs

Assistance dogs must be clearly identified and are welcome to attend. Our front of house team can provide water on request.

First Aid

Stewards are located throughout the Hall if you require assistance please advise and they will arrange for the First Aid staff to attend.

Evacuation and Refuge Points



Refuge points for customers with limited mobility are located throughout the building. In the event of an emergency evacuation, Stewards will advise on the nearest point and once there, staff will confirm procedure for exit.