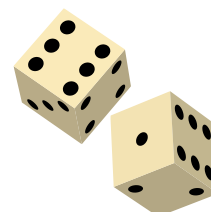
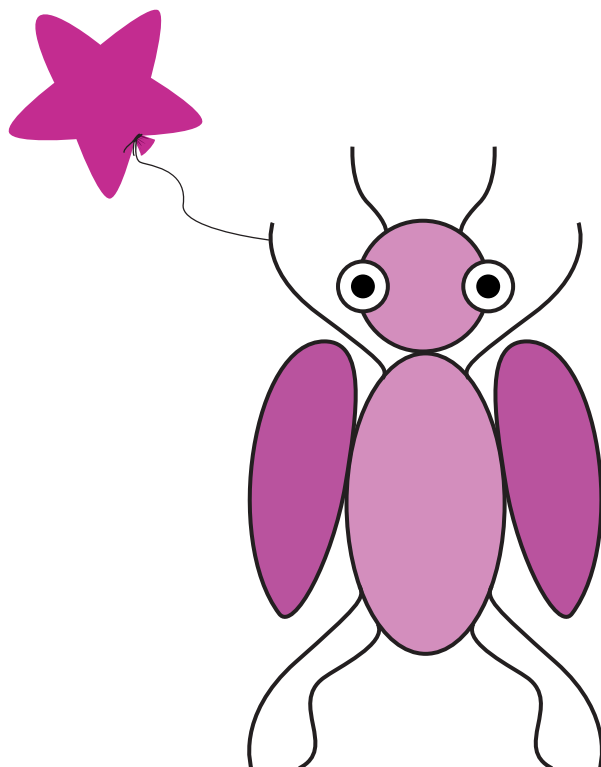


# Beetle Drive Party Game



## Beetle Drive Instructions:

A beetle drive is an old favourite - a simple game requiring only paper, pencils and dice. A great game enjoyed by all ages.

The aim of the game is to be the first player to draw a complete beetle. The body parts you draw are determined by the throw of the dice.

Before the game starts each player throws the dice to determine who goes first - usually the highest throw goes first. Each player can commence playing as soon as they have thrown a 6. Once you have thrown a 6 to start you do not have to throw the dice in any particular order. Each player then throws the dice and draws body parts of the beetle depending upon the number on the dice.

Note that you must have thrown a 1 to draw the head before you can draw the feelers and eyes.

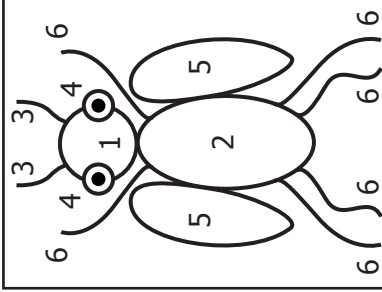
Each player keeps their own score for each game - and the overall winner of all the games on the sheet is the player who scores the most points.

# Beetle Drive

The Beetle has 14 parts which are designated to the following numbers of the dice:

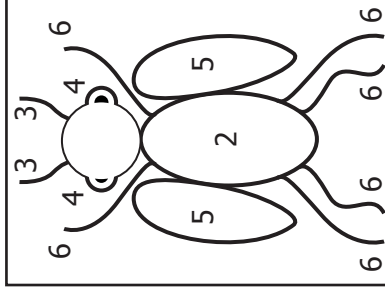
- 1. THE HEAD**   **2. THE BODY**   **3. A FEELER (2)**
- 4. AN EYE (2)**   **5. A WING (2)**   **6. A LEG (6)**

EACH PART MUST BE THROWN SEPARATELY  
 e.g. A "5" FOR EACH WING. A "6" FOR EACH LEG etc.  
 Each part of the body drawn scores 1 point.  
 Thus a Beetle drawn complete scores 14 points.



1	Score	Checked	Score	Checked	Score	Checked	1
							2
							3
4	Score	Checked	Score	Checked	Score	Checked	4
							5
							6
7	Score	Checked	Score	Checked	Score	Checked	7
							8
							9
Score	Checked	Score	Checked	Score	Checked	Score	8
							9
							9

Players Name: \_\_\_\_\_ Total Score: \_\_\_\_\_



1	Score	Checked	Score	Checked	Score	Checked	1
							2
							3
4	Score	Checked	Score	Checked	Score	Checked	4
							5
							6
7	Score	Checked	Score	Checked	Score	Checked	7
							8
							9
Score	Checked	Score	Checked	Score	Checked	Score	8
							9
							9

Players Name: \_\_\_\_\_ Total Score: \_\_\_\_\_

# Beetle Drive

The Beetle has 14 parts which are designated to the following numbers of the dice:

- 1. THE HEAD**   **2. THE BODY**   **3. A FEELER (2)**
- 4. AN EYE (2)**   **5. A WING (2)**   **6. A LEG (6)**

EACH PART MUST BE THROWN SEPARATELY  
 e.g. A "5" FOR EACH WING. A "6" FOR EACH LEG etc.  
 Each part of the body drawn scores 1 point.  
 Thus a Beetle drawn complete scores 14 points.

Players Name: \_\_\_\_\_ Total Score: \_\_\_\_\_